

LTRM SERIES Commercial Lighting

LTRM-2X4-MCTP
ARCHITECTURAL SLOPED-LENS TROFFER

MCTP Multi Color Temperature & Multi Power/Wattage (Selectable)

WESTGATE
THE FUTURE IS HERE...AND IT'S QUITE BRIGHT!

Customer Name: _____

Project Name: _____

Note: _____

Type: _____

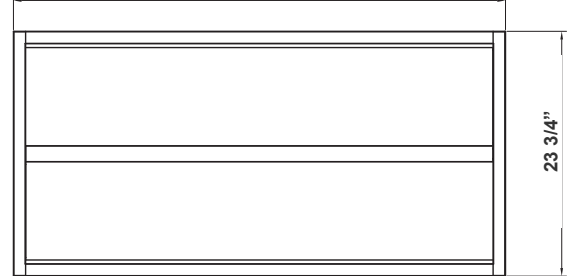
47 1/2"



2 2/5"



47.72"



23 3/4"

This modern, energy-efficient troffer is designed with a sloped lens for enhanced light distribution, offering flexibility with selectable wattage and color temperature (CCT). Ideal for commercial and architectural spaces, it provides seamless integration with varied design aesthetics while delivering superior illumination performance. Featuring adjustable power settings, this troffer maximizes energy savings without compromising lighting quality, ensuring compliance with energy codes and standards. Perfect for office, retail, and educational environments.

2 2/5"(D) x 47 3/4"(W) x 23 3/4"(H)

Features

- High Quality LED Chips Provide High Efficiency, Heat Dissipation, Stability, and Lumen Maintenance
- 7-Year Warranty
- 70,000 Hours Rated Life
- Lens: Polycarbonate
- Multi CCT: Selectable Multi-CCT & Power Switches Inside The Driver Box

Technical Specifications

Electrical:

- Voltage: 120-277VAC 50/60Hz
- Wattage: 40W/45W/50W
- Power Factor: >0.92
- Efficacy: 125 LPW

Mechanical:

- High Quality LED Chips Provide High Efficiency, Heat Dissipation, Stability, And Lumen Maintenance
- Individual, Pure Aluminum Heat Sinks Offers Heat Transmission Faster Than Die Cast Steel
- Driver Disconnect provided Where Required to Comply With US And Canadian Codes
- Performance Engineered Optical Lens Assembly Delivers Unique Beam Angles and Reduces Glare
- Polycarbonate Lens
- Operating Temp: -22°F to 104°F

Lighting:

- Dimmable: 0~10V Dimming
- Multi CCT: Selectable Multi-CCT & Power Switches Inside The Driver Box
- Total Lumens: 5000LM/5625LM/6250LM
- Color Temperatures: 3500K/4000K/5000K
- Inside The Driver Box
- Color Rendering Index: CRI ≥ 80
- IP Rating: IP20 Indoor use only

Applications:

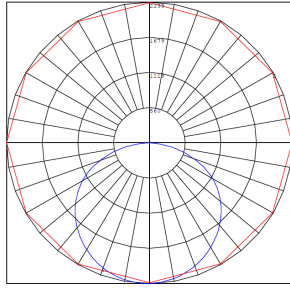
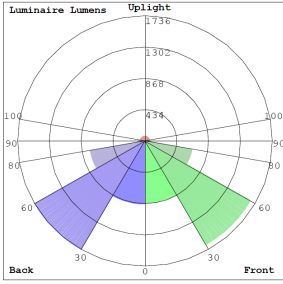
- Retail/Schools/Offices
- Healthcare/Conference rooms
- Hospitality/Corridors
- Reception areas/Foyer
- Library



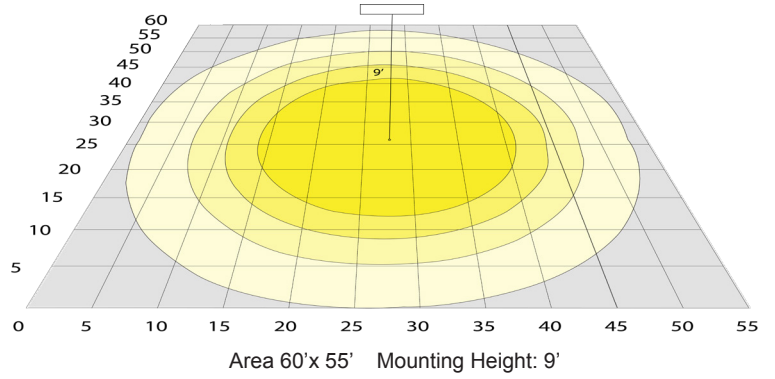
Phone: (877) 805-2252 | Fax: (877) 805-2252
www.westgatemfg.com |



Photometrics: LTRM-2X4-MCTP



BUG Rating: B2-U3-G2



Other Views:



Side View



Front View



Back View

Performance Table: LTRM-2X4-MCTP

| MODEL NO. | Wattage | Voltage | Lumens | Color Temp. | BUG Rating | LPW |
|---------------|-------------------|----------|----------------------------|-------------------------|------------|-----|
| LTRM-2X4-MCTP | 40W 45W 50W | 120~277V | 5000LM 5625LM 6250LM | 3500K 4000K 5000K | B2-U3-G2 | 125 |

Sample Ordering

Model Size Color Temp./Watts

LTRM - 2X4 - MCTP

Accessories:

Blank = No Option For Accessories
LPNG-SRFC-2X4 = SURFACE MOUNTING KIT

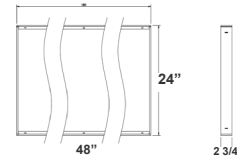
Factory-Installed Options:

Blank = No Option For Accessories
OPT-EM-LTRM= EXTERNAL EMERGENCY BACKUP BATTERY MOUNTED ON TOP
OPT-SEN-2MRD-36= PROGRAMMABLE MICROWAVE BI-LEVEL SENSOR
WEC-3RC= OPTIONAL REMOTE CONTROL
OPT-FWH-63= 6FT 3-WIRE WHIP
OPT-FWH-65= 6FT 5-WIRE WHIP
OPT-FWH-66= 6FT 6-WIRE WHIP

ACCESSORIES and MOUNTING KIT:



LPNG-SRFC-2X4



FACTORY-INSTALLED OPTIONS:



OPT-EM-LTRM



OPT-SEN-2MDR-36



OPT-FWH-63
OPT-FWH-65
OPT-FWH-66



WEC-3RC

